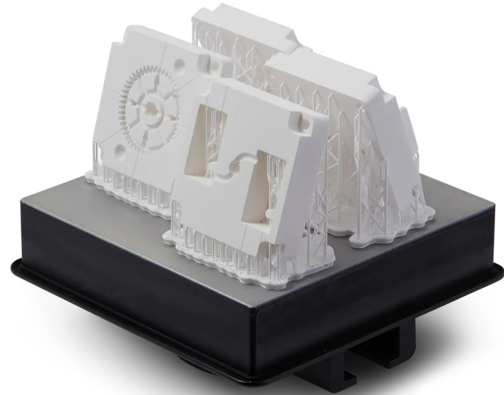
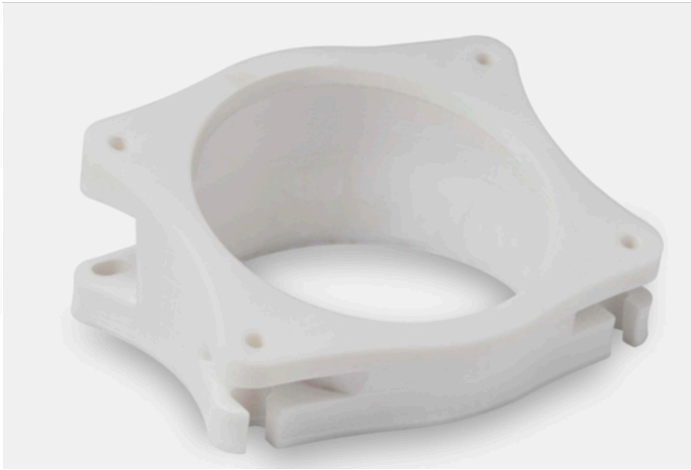


Rigid 10K

Technology: **DLP**

COLOR OPTIONS: White



APPLICATIONS:

- Short-run injection molds and inserts
- Heat-resistant and fluid-exposed components, jigs, and fixtures
- Aerodynamic test models

DESCRIPTION:

This highly glass-filled resin is the stiffest material in our engineering portfolio. Choose Rigid 10K Resin for precise industrial parts that need to withstand significant load without bending. Rigid 10K Resin has a smooth matte finish and is highly resistant to heat and chemicals.

FEATURES:

Simulates stiffness of glass and fiber-filled thermoplastics

TECHNICAL DATA

PROPERTY	ASTM	METRIC UNITS
Tensile Strength	D638M	88 MPa
Modulus of Elasticity, Youngs Modulus	D638M	11 GPa
Elongation Break (%)	D638M	1.7 %
Flexural Strength	D790M	158 MPa
Flexural Modulus	D790M	9.9 GPa
IZOD Impact Strength (notched)	D256A	20 J/m
Heat Deflection Temperature @ 0.45 MPa/66 psi, (°C)	D648	238 °C