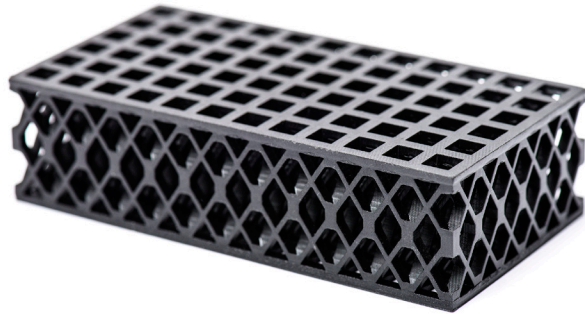


ABS-ESD7

Technology: **FDM**

COLOR OPTIONS: ■ Black



APPLICATIONS:

Jigs & fixtures, electrical connectors, housing, under-the-hood applications.

DESCRIPTION:

FDM Technology uses the same tried and tested thermoplastics found in traditional manufacturing processes. ABS-ESD7 is an ABS thermoplastic with static dissipative properties for applications where a static charge can damage products, impair their performance or cause an explosion.

FEATURES:

Strong. Static-resistant.

TECHNICAL DATA

PROPERTY	ASTM	METRIC UNITS
Tensile Strength	D638M	36 MPa
Modulus of Elasticity, Youngs Modulus	D638M	2,400 MPa
Elongation Break (%)	D638M	3 %
Flexural Strength	D790M	61 MPa
Flexural Modulus	D790M	2,400 MPa
IZOD Impact Strength (notched)	D256A	28 J/m
Heat Deflection Temperature @ 0.45 MPa/66 psi, (°C)	D648	96 °C